

www.simonmoyes.com

Call 0207 323 0040 | [Book Appointment](#)

Simon Moyes
Consultant Orthopaedic Surgeon

[Home](#) [Treatment](#) [About](#) [Patients](#) [Team](#) [Contact](#)



Simon specialises in arthroscopic and minimally invasive treatment for problems of the knee, shoulder, foot and ankle.

[Book Appointment](#)

9000	270	25%
Operations to date	Patients per month	Surgical strike rate

Simon Moyes specialises in keyhole - or arthroscopic - surgery. This is a highly sophisticated, minimally invasive technique which means you spend less time in hospital and you are more likely to have a quick recovery.

Shoulder	
Foot	
Ankle	

www.ankle-arthroscopy.co.uk

Ankle Arthroscopy

[HOME](#)[PATIENTS' SITE](#)[SURGEONS' SITE](#)[VIDEOS](#)[ABOUT SIMON MOYES](#)[CONTACT](#)[LINKS](#)

Ankle Arthroscopy Website

Simon Moyes specialises in keyhole – or arthroscopic – surgery. This site is dedicated to conditions of the ankle joint that are treated by Simon. Patients can find all the information they need about some of the more common ankle problems, while surgeons and medical professionals can find an up-to-date medical resource for those involved in or studying ankle arthroscopy.

Quick Search

Go straight to the specific page you are looking for by using the drop down below:

Patients' Site

An outline of common ankle problems, with information about how the injury / ailment feels, what surgery is likely and the projected recovery time.

[Click here for the Patients' Site](#)

Surgeons' Site

An in-depth resource about all aspects of ankle arthroscopy for medical professionals. Contains highly-referenced documentation of the procedure, citing examples from the early history to current findings.

[Click here for the Surgeons' Site](#)

Simon Moyes | Medico-legal

© Simon Moyes 2007 | sitemap | disclaimer

ankle-arthroscopy.co.uk

A photograph of a person's right ankle and foot being examined by a healthcare professional. The professional's hand is visible, with the thumb pressing on the lateral malleolus (outer ankle bone). A dark, wavy line is drawn on the skin of the lateral ankle, indicating the site of an injury. The background is a clinical setting with a white surface.

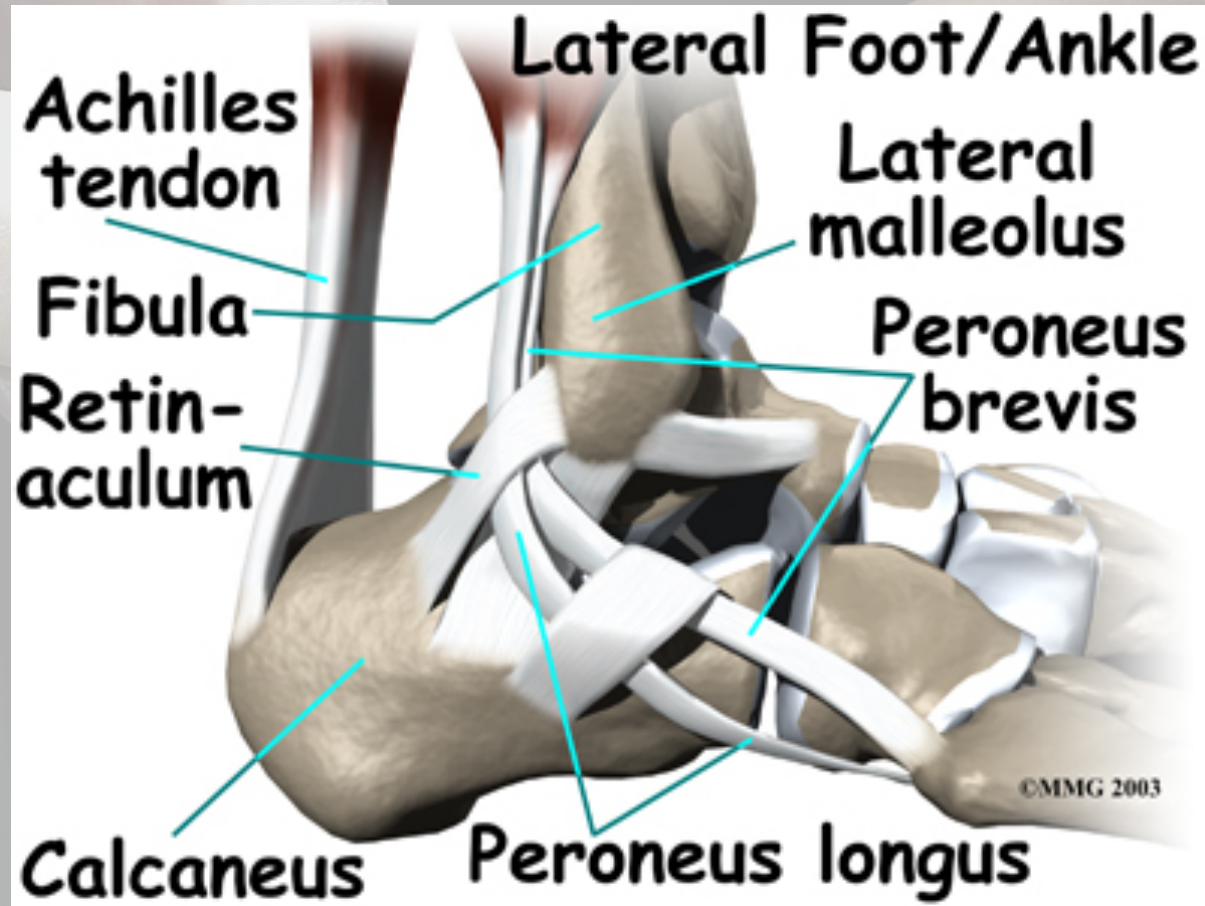
Ankle Inversion Injuries

Presented by Mr Simon Moyes

Incidence 1/10,000 people per day



Lateral Ankle Structures



Potential Injuries

1. Fractures
2. Lateral ligament injuries
3. Peroneal tendon injuries
4. Syndesmosis injuries
5. Talar Dome injuries
6. Any combination of the above

Fractures

Fibular



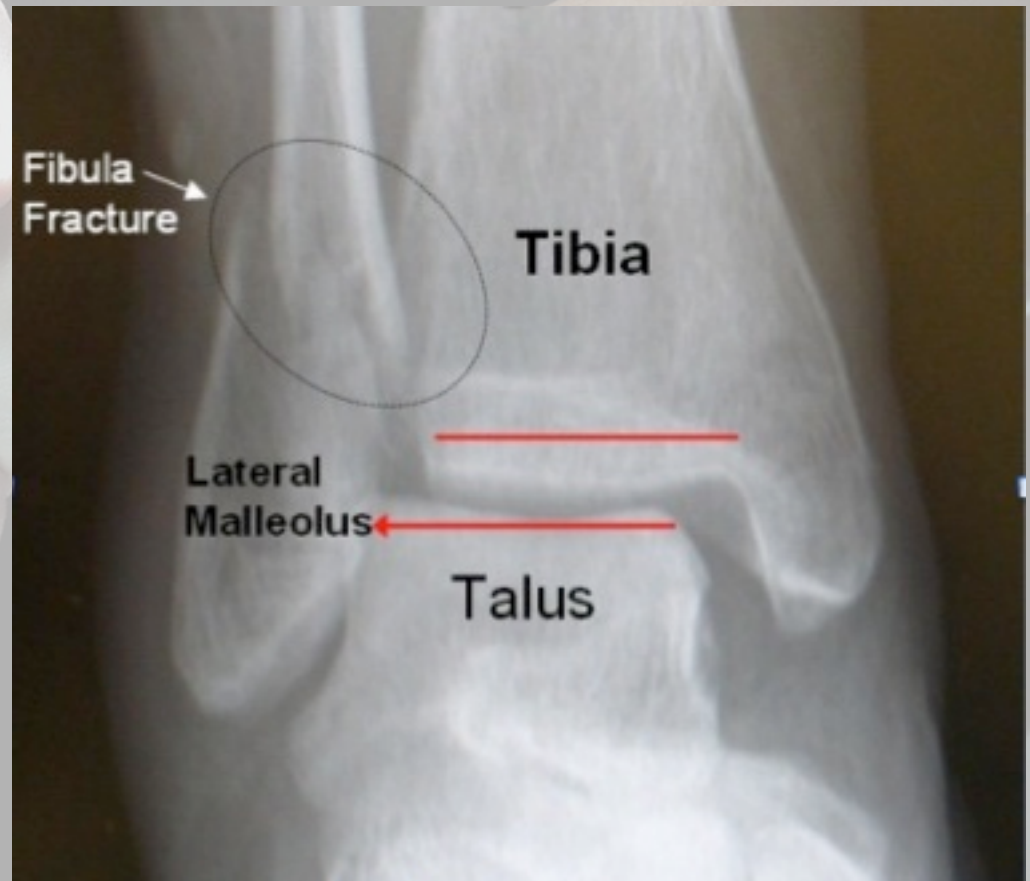
Fractures

5th Metatarsal



Fractures

Ankle Fractures



Fractures

Cuboid Fractures



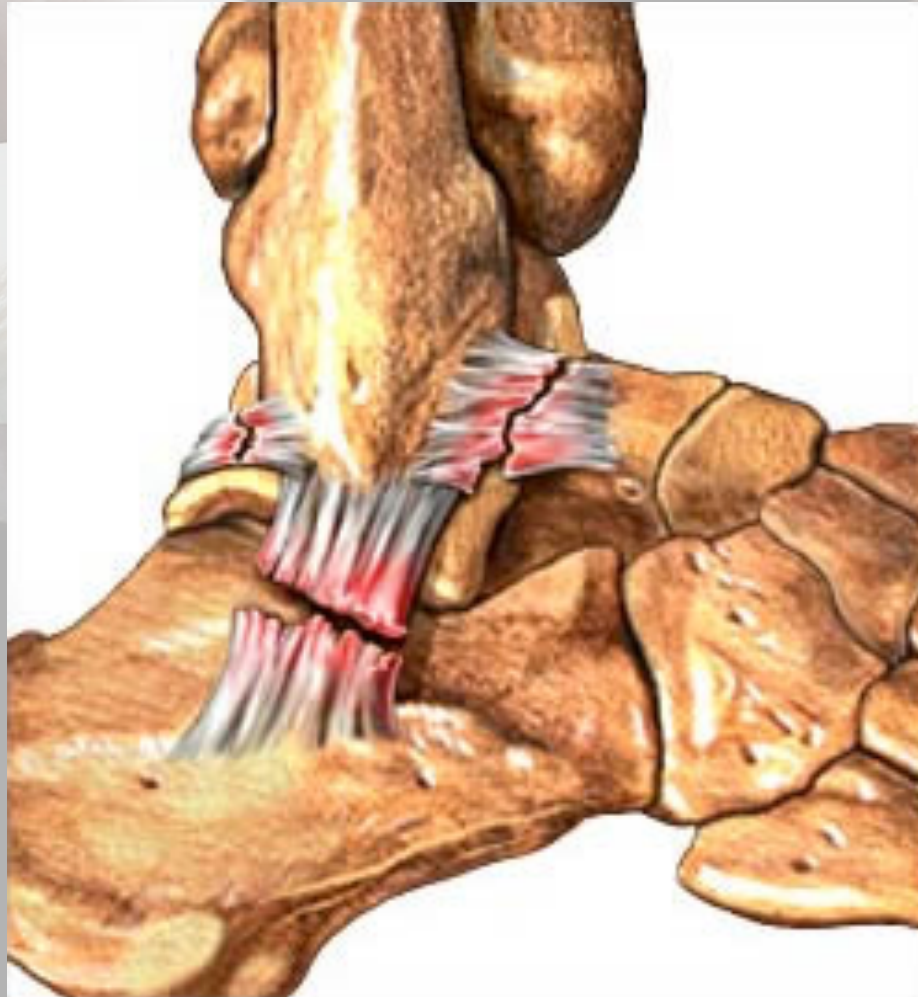
Lateral Ligament Injuries



Lateral Ligament Injuries



Lateral Ligament Injuries



Peroneal Tendon Injuries



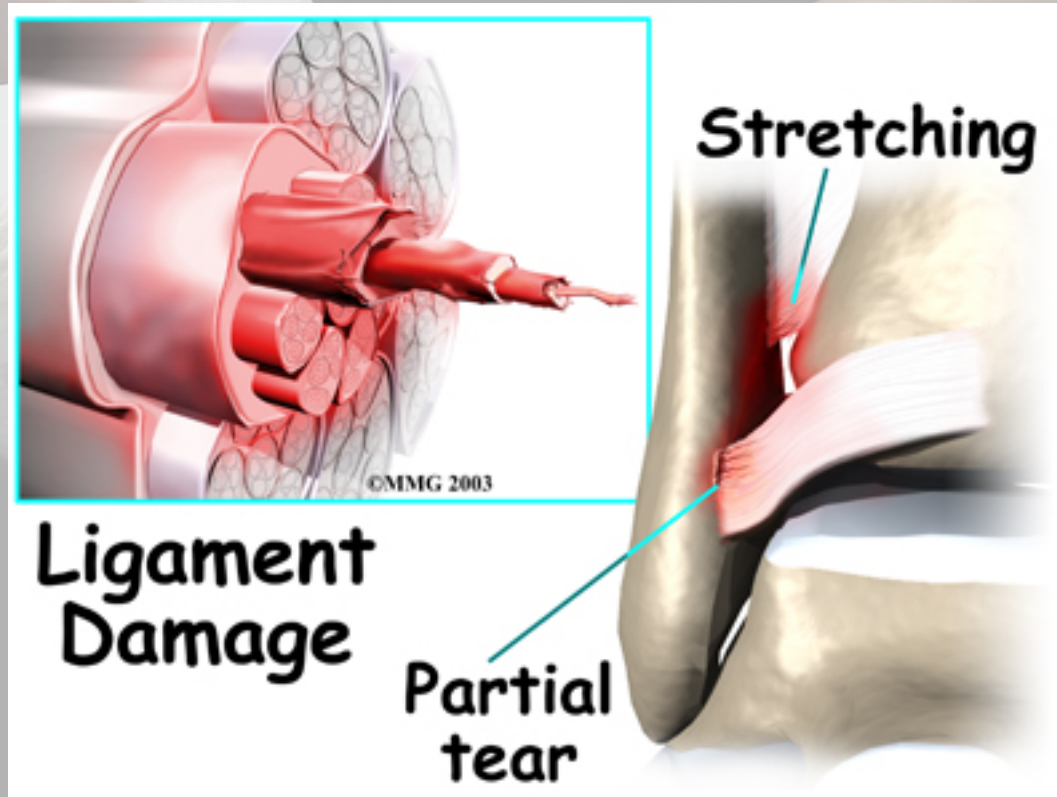
Peroneal Tendon Injuries



Syndesmosis Injuries



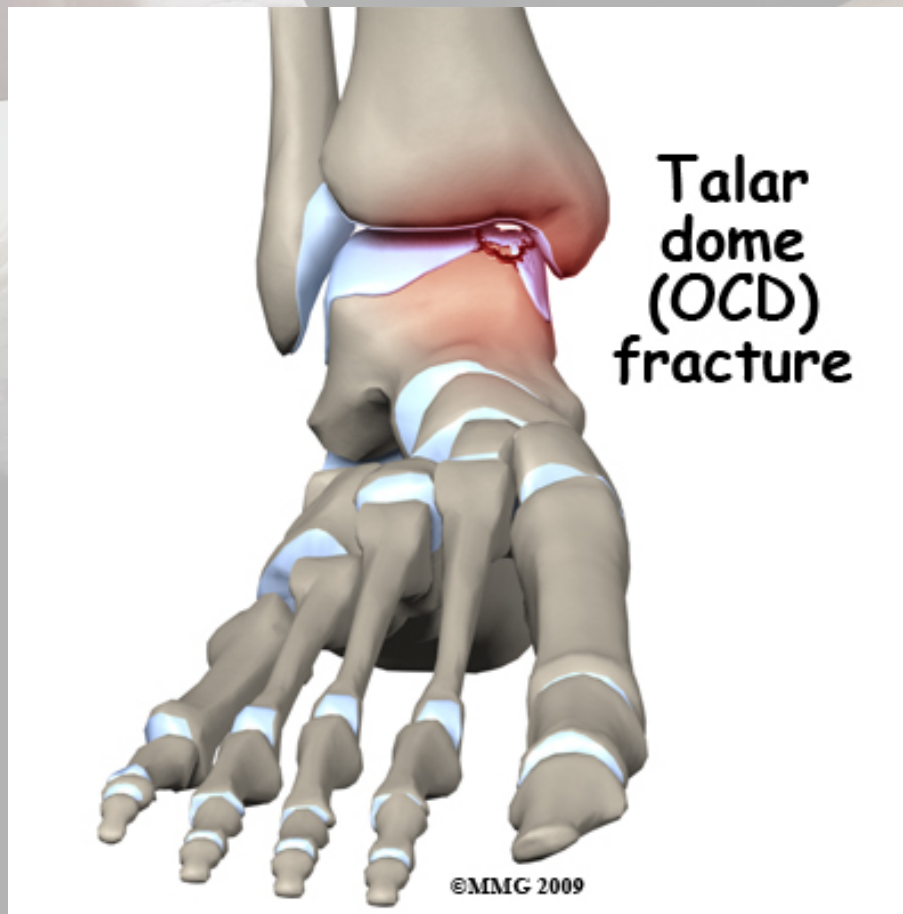
Syndesmosis Injuries



Syndesmosis Injuries



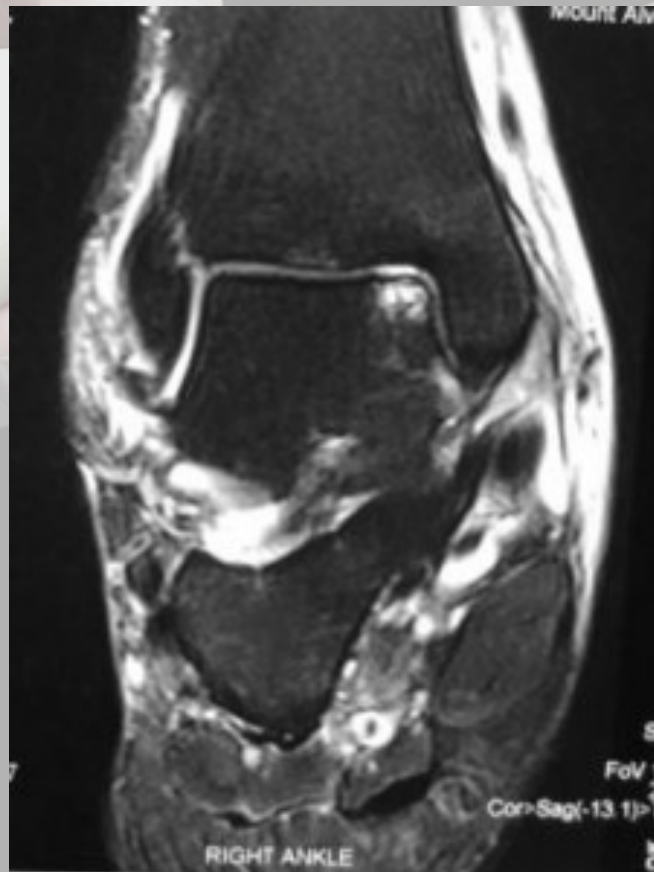
Talar Dome Injuries



Talar Dome Injuries



Talar Dome Injuries





A close-up photograph of a hand gently holding a foot. The hand is positioned on the left, with fingers wrapped around the foot. The foot is on the right, with the heel and arch visible. The skin tones are light. The background is dark and out of focus. A semi-transparent white rectangular box is overlaid on the center of the image, containing the text "Thank You" in a black serif font.

Thank You